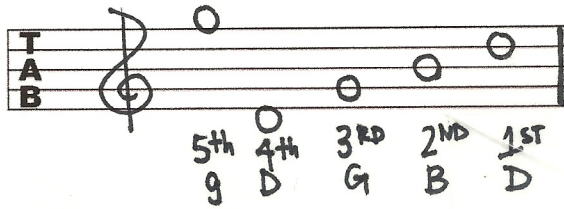


BEGINNER'S GUIDE TO OLD TIME BANJO TUNINGS

- AARON KEIM

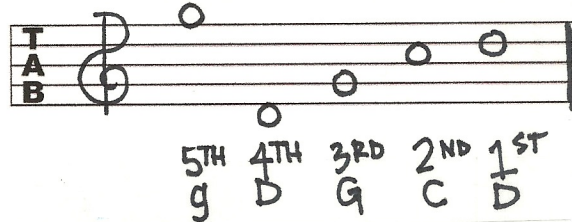
● STANDARD OR "G" TUNING



THE MOST COMMON TUNING. GOOD FOR MOST "G" SONGS AND TUNES. CAPO 2ND FRET FOR MOST "A" TUNES.

EX. "CRIPPLE CREEK", "CINDY", "BILL CHEATHAM"

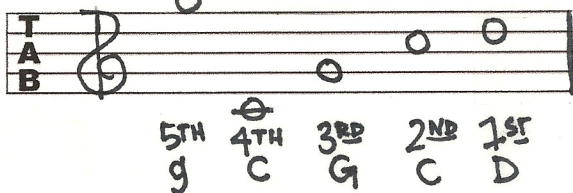
● SAWMILL/MOUNTAIN MINOR/G MODAL TUNING



THE 2ND STRING IS TUNED UP $\frac{1}{2}$ STEP FROM STANDARD TUNING. USED FOR MANY MODAL SONGS AND TUNES.

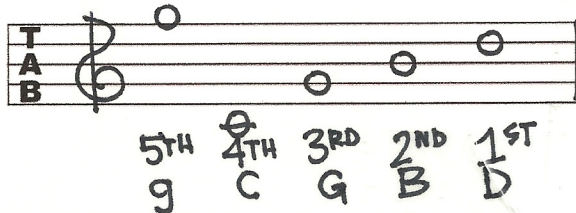
CAPO 2ND FRET FOR "A" MODAL.
EX. "THE CUCKOO", "LITTLE MAGGIE", "GREASY COAT"

● DOUBLE C TUNING



FROM STANDARD TUNING, TUNE THE 4TH STRING DOWN A STEP AND THE 2ND STRING UP A $\frac{1}{2}$ STEP. THIS IS USED TO PLAY IN THE KEY OF "C" OR "D" IF YOU CAPO THE 2ND FRET.
EX. "SOLDIER'S JOY", "OVER THE WATERFALL", "ANGELINE THE BAKER"

● DROP C OR CLASSICAL TUNING



THIS IS A TUNING POPULAR WITH CLASSICAL AND FINGER STYLE BANJO PLAYERS. WHEN YOU REMOVE THE 5TH STRING YOU HAVE THE TUNING THAT JAZZ/PLECTRUM PLAYERS OFTEN USE. THIS USED TO BE MORE COMMON FOR "C" TUNES, BUT HAS SORT OF BEEN REPLACED BY DOUBLE C.

• THESE TUNINGS AND THEIR "CAPO-ED" VERSIONS ARE THE MOST COMMON AND WILL GET YOU THROUGH THE MAJORITY OF THE STANDARD OLD TIME REPERTOIRE. THERE ARE COUNTLESS OTHERS, BUT THIS IS A GOOD START.

YOU TUBE LINK: <http://tinyurl.com/banjotunings>