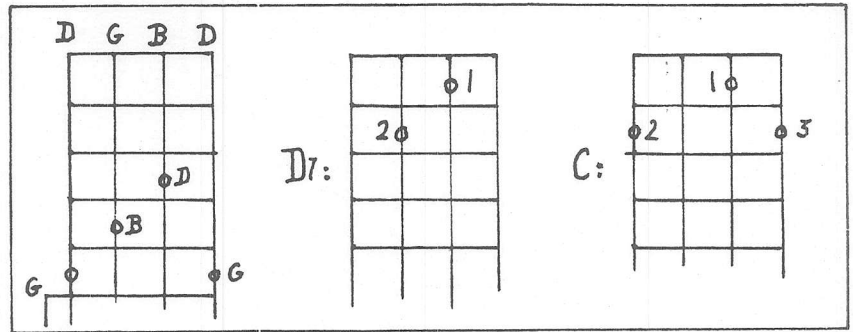


Five String Banjo Styles taught by Happy Traum

OPEN G TUNING



BASIC PICKING

ALT. BASS:

Banjo { 1 2 3 4 5 }
Strings { 1 2 3 4 5 }

T I T I T I T I

1st VARIATION

MIXTURE

2nd VARIATION

HAMMER-ON

MY HOME'S ACROSS THE SMOKEY MOUNTAINS

BANJO (approx.) T T I T I G D7 G

VOICE

MY HOME'S A CROSS THE SMO-KEY MOUN-

-TAINS, MY HOME'S A CROSS THE SMOKEY -MOUNT

TAINS, MY HOME'S A CROSS THE SMO-KEY MOUNTAINS, MY

LOVE, - AND I NE-VER 'SPECT TO SEE YOU A-NY MORE. (ETC..)

Five String Banjo Styles

Lesson 1 Side 2

WILLIE MOORE

1. Wil - lie Moore was a King, his age twenty one, he courted a dam - sel fair Her
 eyes were as bright as the dia - monds in the night and rav - en was her hair.

INSTRUMENTAL

D:

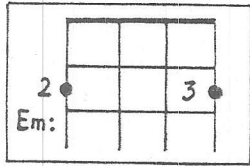
2. He courted her both night and day
 to marry they did agree
 But when they came to get her parent's consent
 they said it could never be.

3. She threw herself in Willie Moore's arms.
 as of times had done before
 But little did he think when they parted that night
 Sweet Ann he would see no more.

Five String Banjo Styles

Lesson 1 Side 2

SWANNANOVA TUNNEL



Musical notation for the first line of "SWANNANOVA TUNNEL". It features a treble clef and a key signature of one flat. The melody consists of eighth and quarter notes. Chords G and Em are indicated above the staff. The lyrics "ASH-VILLE JUNC-TION SWAN' DA TUN-NEL" are written below the staff.

Musical notation for the second line of "SWANNANOVA TUNNEL". It continues the melody with eighth and quarter notes. Chords D7 and G are indicated above the staff. The lyrics "ALL CAVED IN BUDDY ALL CAVED IN." are written below the staff.

SMOKEY MOUNTAINS (Instrumental)

REMEMBER: Nothing is ever played the same way twice.

Musical notation for the first line of "SMOKEY MOUNTAINS (Instrumental)". It features a treble clef and a key signature of one flat. The melody consists of eighth and quarter notes. Chord G is indicated above the staff.

Musical notation for the second line of "SMOKEY MOUNTAINS (Instrumental)". It continues the melody with eighth and quarter notes. Chords D7 and G are indicated above the staff.

Musical notation for the third line of "SMOKEY MOUNTAINS (Instrumental)". It continues the melody with eighth and quarter notes.

Musical notation for the fourth line of "SMOKEY MOUNTAINS (Instrumental)". It continues the melody with eighth and quarter notes. Chords D7 and G are indicated above the staff.

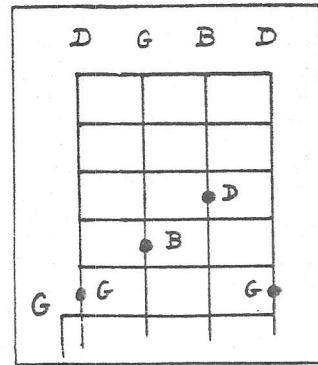
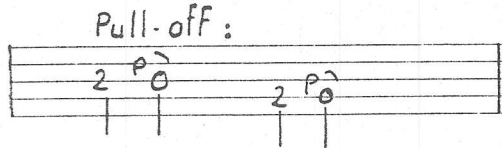
THE CANNONBALL (Solid Gone)

1. Starch my jumper, wash my overalls
I'm boarding that train they call the Cannonball
from Buffalo to Washington.
2. My baby left me, even took my shoes
Didn't leave me nothin' but them long lonesome blues
New she's gone, she's solid gone

3. Listen to that train comin' down the line
Trying to make up all of her lost time
From Buffalo to Washington
4. Goin' north my baby, goin' north this fall
If my luck don't change I won't be back at all
Because she's gone, she's solid gone.
5. Yonder comes that train, comin' down the track
Carry me away and never comin' back
My blue-eyed babe, I'm leavin' you.

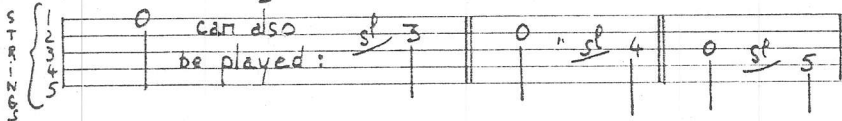
Five String Banjo Styles taught by Happy Traum

G TUNING



RIGHT HAND:
T: Thumb
I: Index

Sliding to notes:



LITTLE BIRDIE (Instrumental)

* : Some measures with Pull. Off:

CUMBERLAND GAP

ALTERNATE

1. Me, my wife, and my wife's pap —
All went down to Cumberland Gap

chorus: Cumberlan Gap. Cumberland Gap
Sixteen miles to Cumberland Gap.

2. Cumberland Gap's a Hell of a place —
Three kinds of water to wash your face.

3. Lay down boys and take a little nap —
Sixteen miles to Cumberland Gap.

4. Dan'l Boone on Pinnacle Rock
He killed bear with his old flint lock.

Five String Banjo Styles

Lesson 2 Side 2

DOWN IN A WILLOW GARDEN

Down in a wil-low gar-den where me and my love did meet, 'Twas there we
 Fell a-court-ing, my love dropped off to sleep. I had a bot-tle of
 Burgun-dy wine, my true love did not know, and there I poison'd that
 dear lit-tle girl, down un-der the banks be-low.

INSTRUMENTAL

(END)

Repeat From end

Never play it the same way twice! - H.T.

Do not pass GO.
 Do not collect
 \$ 200.

Five String Banjo Styles

Lesson 2 Side 2

BLACK-EYED SUZY

H : Hammer-on
P : Pull-off
sl : Slide

1. Black-eyed Suzy's 'bout half grown
 Jumps on a man like a dog on a bone

Chorus:
 Hey, Pretty little Black-eyed Suzy
 Hey.

2. All I want in this creation
 Suzy for my wife and a big plantation.

(chorus)

3. Up the creek and 'cross the water
 Some old man's gonna lose his daughter.

(chorus)

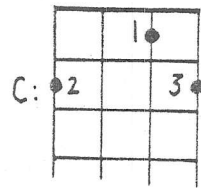
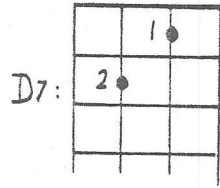
4. All I need to make me happy
 Two little boys to call me
 "Pappy".

(chorus)

Make up new verses ad lib.
 (keep 'em clean.)

Five String Banjo Styles taught by Happy Traum

G Tuning: G^{\flat} D G B D



I: Index
T: Thumb
B: Brush

"UP-PICKING"

Count: (1 + 2 +) Bum - Did - dy (1 + 2 +) Bum - Did - dy

CHANGING CHORDS

ADDING HAMMER-ONS

JESSE JAMES (Accompaniment)

Jes - se James was a lad who
killed many a man, he robbed the Glen - dale train,
He stole from the rich and he gave to the poor with a
hand and a heart and a brain. Chorus: Poor Jesse had a wife who

Five String Banjo Styles

Lesson 3 Side 1

JESSE JAMES (Accompaniment) (Cont'd)

mourned for his life, three children they were brave
 But that dirty little coward who shot, Mister Howard, has
 laid Jesse James in his grave.

REMEMBER: All accompaniments are approximate, and can be varied constantly.
 I have notated only one of a variety of ways of backing up a song.

IRENE (UP-PICKING IN 3/4 TIME)

Count: (1 + 2 + 3 + 1 + 2 + 3 +) I — rene Good night
 I — rene, Good night — Good night I — rene, Good
 night, I — rene, I'll see you in — my dreams.

Happy Traum • Box 694 • Woodstock, New York • 12498

Five String Banjo Styles

Lesson 3 Side 2

CTUNING

C	G	B	D
[Diagram: Open strings C, G, B, D]			
G			

C:
[Diagram: C chord with hammer-on on 2nd string]
hammer-on

F:
[Diagram: F chord]

G:
[Diagram: G chord]

G7:
[Diagram: G7 chord]

BANKS OF THE OHIO

I asked my love to take a walk
 Just to walk a little way
 And as we walked we'd have a talk,
 a bout our com-
 ing wedding day. So only say etc.

Try to play as many songs as you can think of. Here are parts of the songs on the tape. Figure out the rest by ear. Make up verses. Sing with other people!
KEEP PICKIN'!

CINDY

You ought to see my Cindy,
 She lives a way down south,
 She's so sweet the ho-ney bees just swarm a-round her mouth
 Get a-long home Cindy,
 Cindy get a-long home — Cin-dy, Cin-dy, etc.

Five String Banjo Styles

Lesson 3 Side 2

extra verses: Cindy

Cindy in the summertime
Cindy in the fall,
If I can't have Cindy-gal
I won't take none at all

Cindy had religion
She shouted all around
She got so full of glory
She shook her stocking's down
chorus:

When I was a little boy
I used to want a knife
Now I am a bigger boy
And all I want's a wife.
chorus:

Once I had a fortune
I laid it in a trunk
Lost it all to a gamblin' man
One night when I got drunk.

The higher up the cherry tree
The riper grows the cherry
The more you hug and kiss a girl
The quicker she'll get married.

Make up verses or take
them from other songs, like
Cindy, Shady Grove, etc.

Banks of the Ohio

Chorus: So only say that you'll be mine
And in no other's arms entwine
Down beside where the waters flow
Down by the banks of the Ohio.

I asked my love to take a walk
Just to walk a little way
And as we walked we'd have a talk
About our coming wedding day.

I held a knife against her breast
As gently in my arms she pressed
Cryin' "Willy oh Willy, don't murder me
I'm not prepared for eternity."

As I walked home, 'tween twelve and one,
I cried "My God, What have I done?
I've killed the only girl I loved
Because she would not marry me."

I NEVER WILL MARRY

I nev- er will mar-ry I'll
be no man's wife I ex-pect to live single
all the days of my life etc.

This is a very well known ballad, and the words can be found in many folk-song collections, including Joan Baez songbook; Reprints from Sing Out! etc.

Five String Banjo Styles taught by Happy Traum

JESSE JAMES (Instrumental)

G Tuning

Now try the second half of the tune with a little more style: hammer-ons, slides, etc.

BANKS OF THE OHIO (Instrumental)

G Tuning

Five String Banjo Styles

Lesson 4 Side 1

CRIPPLE CREEK

Musical notation for "CRIPPLE CREEK". The piece is in 4/4 time. The first system includes a circled 1 and chords G, C, G, D7, G, G. The second system includes chords C and G. The third system includes chord G. The fourth system includes a circled 2 and chords G, C, G, D7, G, with the instruction "(VARIATIONS WITH PULL-OFFS)". The fifth system continues the notation with various pull-off techniques.

Lesson 4 Side 2

GREENLAND WHALE

Musical notation for "GREENLAND WHALE". The piece is in 4/4 time. The first system includes a circled G and the instruction "INSTRUMENTAL". To the left of the first system is a diagram for a D7 chord: a 5-string banjo fretboard with dots at the 1st fret (string 5), 2nd fret (string 4), and 4th fret (string 3). The second system includes a circled D7. The third system includes chords G, C, and *D7.

Five String Banjo Styles

Lesson 4 Side 2

GREENLAND WHALE (Cont'd)

BAR CHORDS

Lyrics to GREENLAND WHALE FISHERIES

1. 'Twas in eighteen hundred and fifty three
On June the 13th day
That our gallant ship her anchors weighed
And for Greenland sailed away, Brave Boys,
For Greenland sailed away.
2. The lookout in the cross trees stood
With a spy glass in his hand,
There's a whale, there's a whale, there's a
whale fish he cried
And she blows at every span, Brave Boys,
And she blows at every span.
3. We struck that whale and the line played out
But she made a flunder with her tail
And the boat capsized and four men were drowned
But we never caught that whale, Brave Boys, etc.
4. To lose a whale our captain cried
It grieves my heart full sore,
But to lose four of our gallant men
It grieves me ten times more, Brave Boys, etc.
5. Oh, Greenland is a dreadful place
It's a land that's never green
Where there's ice and snow, and the whale fishes blow,
And daylight's seldom seen, Brave Boys,
And daylight's seldom seen.

Five String Banjo Styles

Lesson 4 Side 2

CINDY (1)

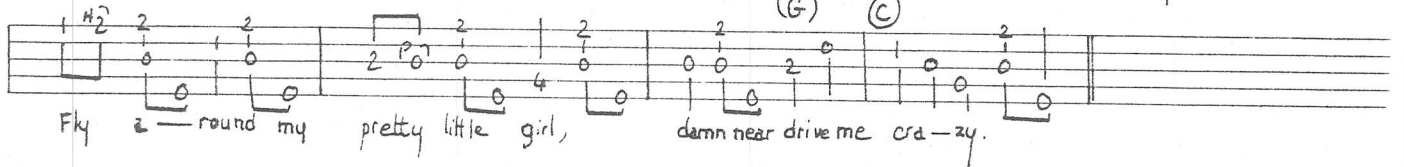
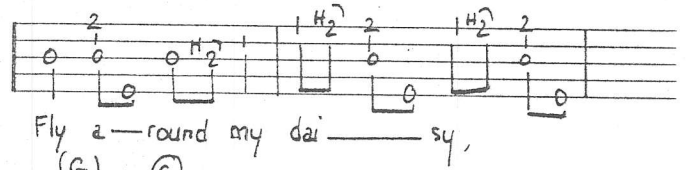
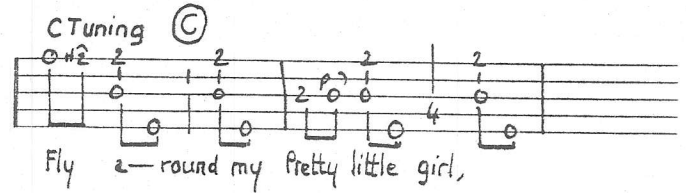
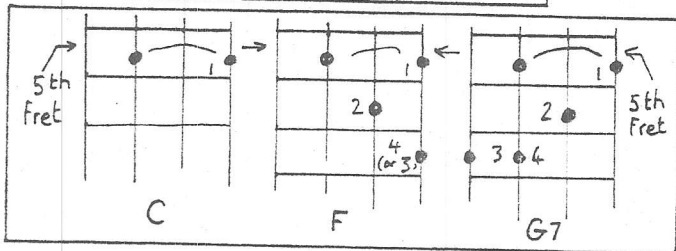
Musical notation for Cindy (1) on a five-string banjo. The piece consists of four staves of music. The first staff starts with a circled G chord and is labeled '(Bar XII)'. The second staff includes a circled D7 chord and a circled G chord, with the section labeled 'Chorus (Bar V)'. The third staff begins with a circled G chord and ends with a circled D chord. The fourth staff is labeled 'VARIATION:' and includes a circled G chord, followed by a double bar line and the text 'etc.'.

CINDY (2)

Musical notation for Cindy (2) on a five-string banjo. The piece consists of two staves of music. The first staff begins with a circled G chord. The second staff includes a circled D chord labeled '(Bar VII)' and a circled G chord labeled '(Chorus)'. The notation includes various fret numbers and pickup notes.

FLY AROUND

BAR CHORDS IN C (5th Fret)

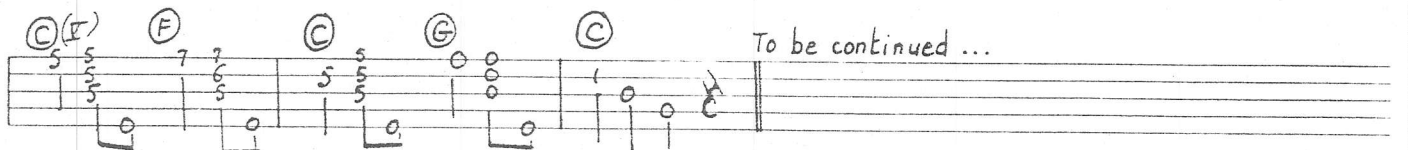
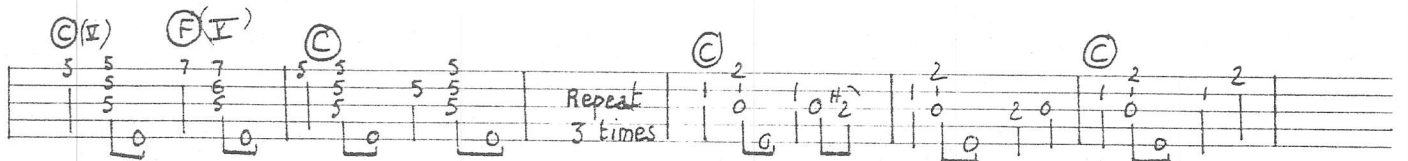


Once I had a fortune
I laid it in a trunk
Lost it all to a gamblin' man
One night when I got drunk.

The higher up the cherry tree
The riper grows the cherry
The more you hug and kiss a girl
The quicker she'll get married.

Make up verses or take
them from other songs, like
Cindy, Shady Grove, etc.

PENNEY'S FARM



Five String Banjo Styles taught by Happy Traum

C Tuning

PENNEY'S FARM (1) (Instrumental)

PENNEY'S FARM (2)

DOWN ON PENNEY'S FARM

Come you ladies and you gentlemen
 Listen to my song,
 You may think it's right,
 May think it's wrong
 It may make you mad
 But I mean no harm,
 It's all about the renters down on Penny's Farm.
 (chorus) Hard times in the country
 Down on Penny's Farm

You move out to Penney's Farm
 Plant a little crop of 'bacco
 And a little crop of corn
 Come around and see you gonna plid and plod
 Till you get yourself a mortgage on everything you got
 (chorus)

You go in the fields and you work all day
 Way after night but you get no pay
 Promise you meat or a little lard
 It's hard to be a renter on Penney's Farm
 (chorus)

George Penney's renters they will come into town
 With their hands in their pockets and their heads hanging down
 Go to the store and the merchant will say
 Your mortgage is due and I'm waiting for my pay
 (chorus)

Down in the pocket with a trembling hand
 Can't pay you all but I'll pay you what I can
 Then to the telephone the merchant makes a call
 They'll put you on the chain gang, you won't pay at all.
 (chorus)

Five String Banjo Styles

Lesson 5 Side 1

DEEP BLUE SEA

Handwritten musical notation for 'DEEP BLUE SEA' on a five-string banjo. The piece consists of four staves of music. The first three staves show a melodic line with various chords (C, F, G) and fingerings (e.g., 2 2, 3 3, 2 2, 0 4 2, 2, 2, 2, 2, 3 3). The fourth staff is labeled 'Playing harmony to the singing:' and shows a more complex harmonic accompaniment with chords like C, F, and G, and fingerings such as 5 5 5, 7 6 5, 5 5 5, 6 5, 5 5 5, 6 5, 6 5, 5 5, etc.

Figure out the rest yourself

BROWN'S FERRY BLUES

Handwritten musical notation for 'BROWN'S FERRY BLUES'. It begins with a diagram for the F7 chord: a box with strings 2, 3, and 4, and frets 2, 3, and 4. The notation shows a melodic line with chords (F, C, F7) and fingerings (e.g., 5 5 5, 5 5 7, 8 5 7, 5 5 5, 4 3 1, 2, 4 3 1, 2). The piece ends with 'etc.'.

Lesson 5 Side 2

LITTLE MAGGIE (Accompaniment)

SIDE 2

G tuning

F:

		1			
	2				
3			4		

Handwritten musical notation for 'LITTLE MAGGIE (Accompaniment)'. It shows two staves of accompaniment for the lyrics: 'O-ver yon-der stands little Mag-gie, with a dram glass in her hand.' The notation includes chords (G, F) and fingerings (e.g., 0 4 2, 2, 2, 2, 3, 2, 0 4 2, 2, 3, 2, 0 4 2, 2, 3, 2, 0 4 2, 2).

Five String Banjo Styles

Lesson 5 Side 2

LITTLE MAGGIE (cont'd)

Strum:

INSTRUMENTAL

The musical notation for 'LITTLE MAGGIE (cont'd)' consists of three staves. The first staff shows a strumming pattern with notes G, A, B, C, D, E, F, G. The second and third staves are instrumental, featuring chords G, F, and G, and various rhythmic patterns including triplets and sixteenth notes.

RAILROAD BILL (Instrumental)

The musical notation for 'RAILROAD BILL (Instrumental)' consists of two staves. The first staff features chords G and B (Bar IV) and rhythmic patterns. The second staff features chords C (V), G, and D7 and continues the instrumental melody.

RAILROAD BILL

Railroad Bill, RR Bill,
He never works and he never will
And it's ride, ride, ride.

RR Bill, he's a mighty mean man
Shot the lantern out the brakeman's hand
And it's ride, ride, ride.

Five String Banjo Styles

Lesson 5 Side 2

DARLIN' COREY

Musical notation for 'Darlin' Corey' on a five-string banjo. The piece is in G major and 4/4 time. It consists of four staves of music. The first staff begins with a circled G chord. The notation includes various chords (G, F, C), triplets, and dynamic markings such as *sf* and *p*. The piece concludes with a double bar line.

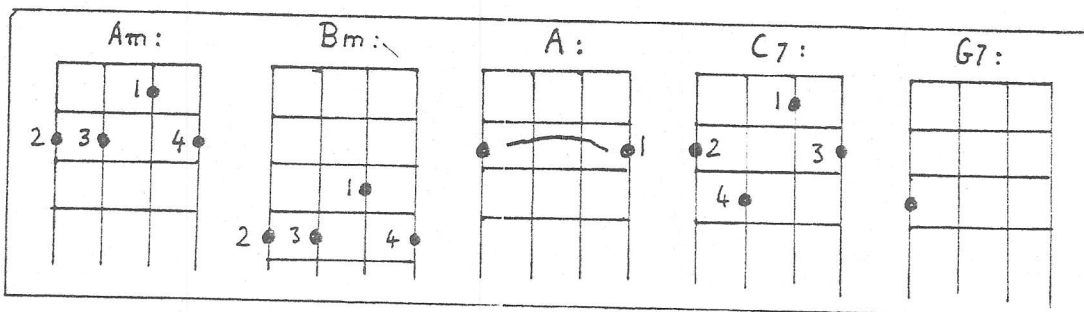
THE HOUSE CARPENTER

Musical notation for 'The House Carpenter' on a five-string banjo. The piece is in G major and 4/4 time. It consists of four staves of music. The first staff begins with a circled G chord and includes a 'Strum' instruction. The notation includes various chords (G, F, C), triplets, and dynamic markings such as *sf* and *p*. A handwritten note in the second staff reads: "(This measure is double-thumbed on the tape.)". The piece concludes with a double bar line.

REMEMBER: This and all other songs can be played an infinite variety of ways.

THE HOUSE CARPENTER (cont'd)

New
Chords
(G Tuning)



THE HOUSE CARPENTER

Well met, well met, my own true love,
Well met, well met, said she.
I've just returned from across the sea
All for the love of thee.

I could have married a king's daughter fair,
She would have married me
But I've forsaken her crowns of gold
All for the love of thee.

If you could have married a king's daughter fair
I'm sure you're much to blame,
For I've lately been married to a house carpenter
And I think he's a fine young man.

If you could have married a king's daughter fair
I'm sure you're much to blame,
For I've lately been married to a house carpenter
And I think he's a fine young man.

Will you forsake your house carpenter
And go along with me?
I'll take you to where the grass grows green
On the banks of the bonnie blue sea.

If I forsake my house carpenter
To go along with you
You'd nothing to maintain me on
Oh then what would I do?

I have three ships all on the sea
And sailing for dry land
And twenty five young sailor men
They'll be at your command.

She turned around to her sweet little babes
Kisses gave them three
Saying stay at home my sweet little babes
Keep your papa good company.

They had been sailing about two weeks
I'm sure it was not more
When under the deck the ship sprung a leak
And sunk to rise no more.

Once around went that gallant ship
Twice around spun she,
Three times around spun our gallant ship
And sunk in the cold, cold sea.

PRETTY PEGGY-O

As we marched down to Fennario
As we marched down to Fennario
Our captain fell in love
And he called her by her name, Pretty Peggy-o.

Come trippin' down the stairs Pretty Peggy-o (2x)
Come trippin' down the stairs
Holdin' back your yellow hair
Say your last farewell to Sweet William-o.

You shall ride in a coach Pretty Peggy-o (2x)
You shall ride in a coach
With your true love by your side
Just as fine as any lady in the country-o.

Our captain he is dead, Pretty Peggy-o (2x)
Our captain he is dead
And he died for a maid
And he's buried in the Louisiana country-o.

Five String Banjo Styles

Lesson 5 Side 2

HARD TRAVELLIN' (Woody Guthrie)

I been doin' some hard travellin', I thought you knowed
I been doin' some hard travellin', way down that road,
I been doin' some hard travellin'
Hard ramblin', hard gamblin'
I been doin' some hard travellin' Lord.

I been workin' in a hard rock tunnel,
I thought you knowed,
I been leanin' on a pressure drill,
Way down that road,
Hammer flyin', air hose suckin'
Six feet of mud I sure been a-muckin'
I been goin' some hard travellin' Lord.

I been hittin' some hard harvestin'
I thought you knowed,
I been hittin' some rough handlin'
Way down that road
Cut that wheat, stack that hay
Tryin' to make about a dollar a day, etc.

I been hittin' that Lincoln Highway,
I thought you knowed
I been a-hittin' that 66
Way down that road,
Heavy load and a worried mind,
Lookin' for a woman that's hard to find, etc.

WHEN FIRST UNTO THIS COUNTRY

When first unto this country
A stranger I came
I courted a fair maid
And Nancy was her name.

I courted her for love
Her love I didn't obtain
Do you think I've any reason or right to complain.

I rode to see my Nancy
I rode both day and night,
I courted dearest Nancy
My own heart's true delight.

I rode to see my Nancy
I rode both night and day
Til I stole me a stallion
Both white looking and gray.

The sheriff's men they followed
And overtook me
They carted me away to
The penitentiary.

They beat me and they banged me
And they fed me on dry beans
Til I wished to my own heart
I'd never been a thief,

With my hands in my pockets
And cap set on so bold
And my coat of many colors
Like Jacob's of old.

Five String Banjo Styles taught by Happy Traum

C Tuning

Five banjo chord diagrams for C Tuning:

- Cm:** Fret 1 on 2nd string, 3rd string open, 4th string open, 5th string open. A hammer-on is indicated on the 2nd string.
- B^b:** Fret 3 on 5th string, 4th string open, 3rd string open, 2nd string open, 1st string open.
- Cm(IV):** Fret 1 on 2nd string, 2nd fret on 3rd string, 3rd fret on 4th string, 4th string open, 5th string open. Labeled "4th fret".
- E^b:** Fret 1 on 2nd string, 2nd fret on 4th string, 3rd fret on 5th string, 3rd string open, 2nd string open, 1st string open. Labeled "4th fret".
- Cm(VIII):** Fret 1 on 2nd string, 8th fret on 4th string, 9th fret on 5th string, 4th string open, 3rd string open, 2nd string open. Labeled "9th fret".

SHADY GROVE

Cm Strum:

Shady Grove, my true love, Shady Grove my dar. lin';

Shady Grove my true love I'm going back to Harlan.

INSTRUMENTAL

Chord diagrams for Shady Grove: Cm, B^b, Cm(IV), Cm, B^b, Cm, Cm(IV), B^b, Cm, B^b, Cm.

BALLAD OF SPRINGHILL

B^b(VI)

INSTRUMENTAL

Chord diagrams for Ballad of Springhill: B^b(VI), Cm(IV), B^b, Cm, B^b, Cm, Cm(IV), B^b, Cm, Cm(VII), F.

Five String Banjo Styles

Lesson 6 Side 1

SPRING HILL (Cont'd)

THE SPRINGHILL DISASTER - additional words

5. Twelve men lay two miles from the pitshaft
Twelve men lay in the dark and sang
Long hot days in a miner's tomb
It was three feet high and a hundred long (repeat)
6. Three days passed and the lamps gave out
And Caleb Rushton he up and says
"There's no more water or light or bread
So we'll live on songs and hope instead."
7. Listen for the shouts of the bareface miners,
Listen through the rubble for a rescue team
Six hundred feet of coal and slag
Hope imprisoned in a three-foot seam.
8. Eight days passed and some were rescued
Leaving the dead to die alone,
Through all their lives they dug their grave
Two miles of earth for a marking stone.

STRUMS

Lesson 6 Side 2

PETE SEEGER'S "WHAMMING"

Clouds so swift, the rain's falling in, Gonna see a movie called "Gunga-Din" etc.

1. Clouds so swift, the rain's fallin' in
Gonna see a movie called Gunga-Din
Pick up your money pack up your tent McGuinn
You ain't goin' no where.

Chorus:

Oo-ee, ride me high
tomorrow's the day my bride's gonna come
oh-oh, we gonna fly
down in the easy chair.

2. Buy me a ring and a gun that sings
A flute that toots and a bee that stings
A sky that cries and a bird that flies
A fish that walks and a dog that talks.

Happy Traum * Box 694 * Woodstock, New York * 12498

Five String Banjo Styles

Lesson 6 Side 2

GUITAR "COWBOY" STRUM

© T I $\frac{M}{2}$ I T I $\frac{M}{2}$ I T I $\frac{M}{2}$ I T I $\frac{M}{2}$ I

Bring me little wa-ter, Sylvie

Bring me little wa-ter now, Bring me little wa-ter Sylvie

Ev'ry little once in a while

1. Bring me little water, Sylvie. Etc.
2. Don't you hear me callin'. Etc.
3. Don't you see me comin'. Etc.
4. Bring it in a bucket, Sylvie. Etc.

TURN, TURN, TURN

Em (C Tuning)

To ev-ry thing Turn Turn,

Turn, there is sea-son, Turn Turn Turn And a time for

ev'ry pur-pose under hea-ven.

Continue strum through song.

TURN, TURN, TURN (Pete Seeger)

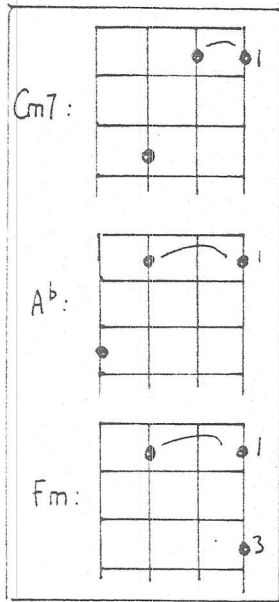
(verse) A time to be born, a time to die
 A time to plant, a time to reap,
 A time to kill, a time to heal,
 A time to laugh, a time to weep. (Chorus)

A time to build up, a time to break down,
 A time to dance, a time to mourn,
 A time to cast away stones,
 A time to gather stones together.

A time of war, a time of peace,
 A time of love, a time of hate,
 A time you may embrace,
 A time to refrain from embracing.

A time to gain, a time to lose,
 A time to rend, a time to sow,
 A time of love a time of hate
 A time of peace, I swear it's not too late.

"CALYPSO" STRUM



Musical notation for the "CALYPSO" STRUM, featuring a G7 chord and a rhythmic pattern of eighth notes with up and down strokes.

MIGHTY DAY

Musical notation for the beginning of "MIGHTY DAY", starting with a Cm* chord and including a "REPEAT" section.

(I re) member

Musical notation for the next line of "MIGHTY DAY", including the lyrics "one Sept - ember" and "Storm winds swept the town,".

Musical notation for the next line of "MIGHTY DAY", including the lyrics "women and children were dyin' Lord, and death was all a round. Wasn't that a" and "mighty day,".

Musical notation for the next line of "MIGHTY DAY", including the lyrics "mighty day, mighty day, wasn't that a mighty day, Great" and "God that morning when the storm winds swept the town."

Musical notation for the next line of "MIGHTY DAY", including the lyrics "God that morning when the storm winds swept the town."

* Sorry - Mistake on the tape: I say "Am" instead of "Cm".

ROCK ISLAND LINE

Well, the Rock Island Line it is a mighty good road,
 The Rock Island Line it is the road to ride,
 The Rock Island Line it is a mighty good road
 If you want to ride you gotta ride it like you find it
 Get your ticket at the station for the Rock Island Line.